

THREE RIVERS VETERINARY GROUP

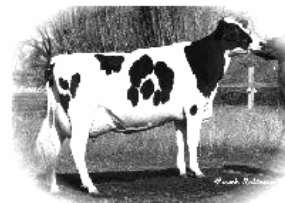
FARM ANIMAL PRACTICE

THE VETERINARY CLINIC,
LONDON ROAD, BECCLES,
SUFFOLK. NR34 9YU.

TEL: 01502 712169 FAX: 01502 712694

CATTLE PRACTICE

SEPTEMBER 2009 NEWSLETTER.



This newsletter has details of a major new initiative to bring new ideas and training in animal disease prevention and treatment to the farmers in the East Anglian region. The money has been provided from the EU through EEDA to NADIS.

What is EEDA?

The role of the East of England Development Agency (EEDA) is to create a good economy in our region, founded on a good knowledge base, with creativity and enterprise.

Their stated role is to:

- Lead and mobilise partners and deploy resources to deliver economic growth in line with the demands and direction of local businesses and organisations
- Deliver measurable, practical programmes that make a positive difference to people's lives and businesses
- Invest in large, long term projects that have a real impact on communities and people's lives
- Persuade and influence others to bring resources together to find innovative ways to solve challenging economic issues.

What is NADIS?

The National Animal Disease Information Service (NADIS) was formed over 10 years ago to monitor diseases in cattle, sheep and pigs. It currently consists of 54 sentinel veterinary practices and the 6 UK Veterinary Colleges. The network shows the important role sentinel practices should play in any UK surveillance system

East of England Health Knowledge Transfer.

This program provides farmers with free veterinary advice in three different ways:

1. **One to one training – for 1-3 people.**
2. **Workshops for 12 people.**
3. **Seminars for 30 people.**

These sessions also provide farmers and stockmen with NPTC certificates of competence.

As a practice we have supported this project in full and it provides a great opportunity to both farmers and stockmen to improve their knowledge of disease prevention control and treatment.

The funding will only go so far – so please contact us to express an interest so that you can take full advantage.

The details of each type of knowledge transfer program are described below.

1. One to One Training.

These sessions last an hour and involve an hour's free veterinary information and advice on most subjects. This can be done on farm at the end of a visit or at the surgery. The sessions are for 1 to 3 people at a time, usually from the same farm but neighbouring farmers could get together.

M. E. BARDSLEY B. Vet Med. Cert CHP*. MRCVS.

* ROYAL COLLEGE OF VETERINARY SURGEONS CERTIFICATE HOLDER IN CATTLE HEALTH AND PRODUCTION

Some of the subjects available are listed below:

- [Salmonellosis in Cattle](#)
- [Scour in Calves at Pasture](#)
- [Lameness in Adult and Growing Cattle](#)
- [Fluke in Cattle](#)
- [Lameness in Cattle](#)
- [Abortion in Cattle](#)
- [PGE in Beef Cattle](#)
- [BVD](#)
- [Johnes in Cattle](#)
- [Bluetongue in Cattle and Sheep](#)
- [Hypomagnesaemia in Cattle](#)
- [Septicaemia in Young Beef Calves](#)
- [Assisted Calvings](#)
- [Lungworm in Cattle](#)
- [Mastitis in dairy cows](#)
- [Nematodirosis](#)
- [Diarrhoea in Beef Calves](#)
- [Respiratory Disease in Beef Calves](#)
- [Digital Dermatitis](#)
- [Displaced Abomasum](#)
- [Downer Cow](#)

This programme provides funded veterinary one to one training to improve animal health and farm profitability. Funding for vet mentoring of these health bulletins is only available for farms in the East of England region postcode area. At the end of each training bulletin you can test your knowledge by answering 6-8 interactive multiple choice questions.

Please contact the surgery if you would like to book a one to one session either on farm at the end of a routine visit or at the surgery.

2. Farmer workshops.

The workshops are for 12 people and may be on farm or at the surgery and are designed to produce information and discussion on a particular subject. Spaces are limited but we hope to roll this out to as many people as possible. Topics include:

- [Parasitic diseases.](#)
- [Mastitis.](#)
- [Lameness](#)
- [Calf Scours](#)
- [Pneumonia.](#)

These are huge subjects and the workshops will concentrate on specific

areas of disease prevention, control and treatment.

Please contact the surgery if you would like to be included in any workshop sessions.

3. Seminars.

These are larger farmers meetings and usually about 30 attend. The first seminar will be held in the next month on [Respiratory Disease and Fertility in Beef Cattle](#). Invitations will be going out shortly.

Butox Swish - controls flies (8weeks) and midges (4 weeks).

250ml - £14.13 (8 cows).

1 Litre – £46.73 (33 cows).

2.5 Litre - £103.89 (83 cows).

12.0 Litre plus applicator (400 cow pack) £415.54. *All prices excluding Vat.*

NEW - Closamectin Pour-On.

Parasite treatments can now all be done in a single Pour-on!!!

- Lungworm.
- Gastro-intestinal worms.
- Liver Fluke.
- Mites/Lice.

Closamectin pour-on is the first pour-on fluke treatment and has just been launched in the UK. Treatment of fluke at 7 weeks (late immature) has a 95% efficacy similar to Closamectin injection. It cannot be used in dairy cows within 60 days of calving but can be used in beef cattle at any stage. The dose rate is 1ml per 10 Kg body weight.

1 litre: £119.84 + Vat (no gun needed).

2.5 Litre: £210.94 + Vat.

5 Litre: £418.95 + Vat.

Gun: £16.05 +Vat.

Ivermectin Pour-On .

For lungworm and gut worms:

2.5 litres Enovex at £46.09 + VAT!!!

If you don't have a gun we can provide one for £20.32 +VAT.

Trodax Injection – Offer Pack.

Treats liver fluke only – can be used with pour- on wormer.

The pack contains 2x500ml which contains enough for 66 x 500kg cattle (or 111 x 300 Kg) - **£135.51 + vat.**

M. E. BARDSLEY B. Vet Med. Cert CHP*. MRCVS.