

# THREE RIVERS VETERINARY GROUP.

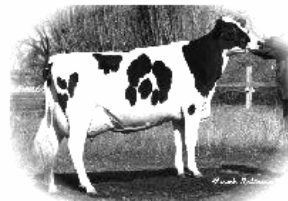
## FARM ANIMAL PRACTICE.

THE VETERINARY CLINIC,  
LONDON ROAD, BECCLES,  
SUFFOLK. NR34 9YU.

TEL: 01502 712169 FAX: 01502 712694

## CATTLE PRACTICE

### OCTOBER 2010 NEWSLETTER.



**Following the last two months of wet weather; it is appropriate to review the advice for Liver Fluke and Lungworm control, both of which will have an increased risk factor.**

### Liver Fluke - High Risk After Wet Weather.

Now is the time to warn you that the risk of liver fluke is very high after the wet, mild weather we have experienced since the beginning of August.

I have outlined some general treatment guidelines but please do not hesitate to contact me if you require further advice.

### Fluke - What treatment?

#### 1. Beef sucklers – Adults.

- **Trodax** injection at 1.5ml per 50kg given subcutaneously. This kills mature and immature stages of liver fluke.
- **Closamectin injection or pour-on\*\*\*.** As well as a fluke treatment this product also contains an Ivomectin wormer. However this is the best time of year to worm your adult cattle because the risk of lungworm infection which is also high following the wet weather

#### 2. Beef cattle – Youngstock.

##### **Closamectin injection/pour-on\*\*\*.**

This product kills adult fluke plus gut worms and lungworms.

#### 3. Dairy cows - Adults.

**Trodax** injection at drying off – 20 ml per 665kg cow subcutaneously.

#### 4. Dairy heifers due to calve.

**Trodax** injection at least 60 days before calving – 15ml per 500kg heifer subcutaneously.

#### 5. Replacement heifers.

**Closamectin injection/pour-on\*\*\*** Treat 2 weeks after housing - dose 1ml per 50kg given subcutaneously. This will kill adult fluke plus remove any worm burdens (gut worms plus lungworms).

**\*\*\*It is not advisable to use an Ivermectin injection at the same time as vaccines as it may reduce the immunity given by the vaccine. This does not seem to apply to the pour-on products.**

### Fluke – when to treat?

1. **Autumn treatment.** The best time to treat for liver fluke is two weeks after housing; this will allow the immature flukes to grow and be more susceptible to the flukicide. With cattle kept outside through the winter a November treatment should be given. If there are any signs of lungworm or gutworm infection prior to this time then worm the cattle with a pour-on as soon as possible and treat for fluke later, otherwise the fluke and worm treatment can be combined after housing. With young stock a combined fluke/worm treatment should be given in any event after housing, regardless of previous treatments.

M. E. BARDSLEY B. Vet Med. Cert CHP\*. MRCVS.

**2. Spring treatment.** A further fluke treatment should be given in the spring prior to turnout to kill any fluke which survived the autumn treatment. This is especially important to reduce the pasture contamination for the next grazing season.

**3. Mid-Summer treatment.** Due to the high level of infection on most farms a mid-summer treatment is now required to reduce the level of pasture contamination. This should be given in July.

**4. Dairy Cows.** Due to milk withdrawal issues fluke treatment has so be done at drying off.

*If you would like specific advice on worm and fluke prevention and treatment we are able to offer free advice sessions through the EEDA/DEFRA/NADIS program. Please contact Karen Flynn to arrange this.*

### **Idiopathic Necrotising Enteritis of Beef Suckler Calves.**

This disease has a long name and was first seen in the mid nineties as a rare disease of unknown cause.

We still don't know the cause of it but it is definitely on the increase. The disease affects 5 – 16 week old calves and the common symptoms are:

- Calves are dull & tucked up.
- Calves may stand with their head extended and held low.
- Diarrhoea.
- Increased respiratory rates.
- Straining to pass faeces.
- Ulceration of the hard palate and gums
- Eye ulcers may occur
- There may be pain in the throat and/or abdomen.

As the cause is unknown there is no definite way of diagnosing the condition except by post mortem.

On post mortem the disease is similar to acute BVD infection and this must first be eliminated as a cause.

The only treatment is symptomatic relief of the symptoms and the condition has a high mortality rate.

### **Pneumonia.**

Pneumonia costs the UK cattle industry approximately £60 million per annum and as the housing season approaches it is a good time to discuss treatment options.

The average costs of a case of pneumonia are:

Per suckler calf - £82.00.

Per dairy calf - £43.00.

However it has now been shown that the losses of the 'in-contact' calves are:

Per suckler calf - £74.00.

Per dairy calf - £30.00.

This has led to the rationalisation of treating all the 'in-contact' cattle with antibiotics as well as the affected animals.

If >20% of a group of dairy calves or >10% of suckler calves are affected then treating the whole group should be considered.

This does not mean that antibiotics can prevent calf pneumonia; vaccination remains the best way to prevent disease and is by far the preferred method, however it may not be practical in every situation.

*If you would like specific advice on pneumonia prevention and treatment we are able to offer free advice sessions through the EEDA/DEFRA/NADIS program. Please contact Karen Flynn to arrange this.*

### **Ivermectin Pour-On.**

For lungworm and gut worms:

2.5 litres Enovex at £47.47 + VAT!!!

### **Closamectin Pour-On.**

**NB There is a 60 day milk withdrawal.**

Treats cattle for liver fluke (adults & immatures), gastrointestinal roundworms, lungworms, lice, mange mites.

**Dose rate - 1ml per 10 Kg body weight.**

1 litre: £123.44 + Vat.

2.5 Litre: £217.27 + Vat.

5 Litre: £431.52+ Vat.

Gun: £16.05 +Vat.

### **Trodax Injection.**

Treats liver fluke only – can be used with pour- on wormer.

The pack contains 2x500ml which contains enough for 66 x 500kg cattle (or 111 x 300 Kg) - **£142.28 + Vat.**