

# THREE RIVERS VETERINARY GROUP

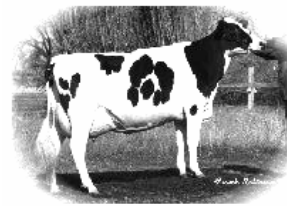
## FARM ANIMAL PRACTICE

THE VETERINARY CLINIC,  
LONDON ROAD, BECCLES,  
SUFFOLK. NR34 9YU.

TEL: 01502 712169 FAX: 01502 712694

## CATTLE PRACTICE.

### MARCH 2009 NEWSLETTER.



**You should have received information about this years Bluetongue vaccination campaign, if not please contact us as soon as possible.**

### Fitting in all the Pre-Turn-Out Medications and Vaccinations.

Bluetongue vaccination has added to the already dense schedule of pre-turnout treatments. Here are some dos and don'ts to help you to plan ahead:

#### 1. Vaccines which need a 2 week gap before other medications or vaccines:

- Bluetongue vaccine.

You could give worm boluses, drenches, pour-on preparations and Trodax (for fluke) with this vaccine but not injectable Ivermectins or any other vaccines.

- Huskvac vaccine.

No other vaccine or wormer (it will destroy the live larvae in the vaccine) should be given at the same time.

#### 2. Vaccines which can be given together (at different sites):

- Leptavoid H vaccine.
- Bovilis BVD vaccine.
- Bovilis IBR marker vaccine.

#### 3. Worming and Fluke preparations.

- Trodax injection for fluke.

This can be given at the same time as vaccines and other worming preparations.

- Closamectin injection.

This product contains an Ivermectin as well as a fluke treatment and is not recommended for use at the same time as any vaccine.

- Ivermectin injections.

These products are not recommended for use at the same time as any vaccine.

- Ivermectin Pour – on products.

These can be used at the same time as fluke treatments and vaccines.

### New Calf Scour Tests available at the Practice.

Following on from last month's newsletter concerning calf scour, we are now able to test calf faeces samples at the practice for the following diseases:

- Rotavirus.
- Coronavirus.
- E.Coli K99.
- Cryptosporidia.

We require a 5ml sample (teaspoonful) in a sterile pot, you can use milk sample pots or we can provide containers for you. Please use the collection procedure outlined in my last newsletter and remember to wear gloves and be aware that some of the causes of calf scour are transmissible to humans.

**NB.** Please ensure all samples are in a clean bag and are not contaminated with faeces on the outside when they are handed to our reception staff.

### Free Mastitis Investigation and Laboratory Tests.

I have available a free mastitis investigation package, which includes bacteriology for 20 samples. This is available to anyone currently experiencing a problem and is worth around £200 in laboratory fees.

M. E. BARDSLEY B. Vet Med. Cert CHP\*. MRCVS.

## **Liver Fluke – Levels of infection keep increasing.**

The incidence of Liver Fluke continues to increase ahead of predictions both nationally and in East Anglia. This is due to the warmer winters; higher levels of surface water on the marshes; longer periods of grazing etc.

A recent survey showed that 42% of farmers whose herds had no previous history of fluke were affected.

February/March is the time when clinical signs may start; we are now advising that all animals are treated in the autumn and now prior to turnout to kill any fluke that survived the autumn treatment. On farms that have a high level of challenge a mid-summer treatment is also recommended.

To recap the effects of this disease can be slow in onset and result in the signs below:

- Weight loss leading to recumbency.
- A delay to oestrus (heat period) in heifers by 39 days.
- An extra 0.5 services per conception.
- An increase in calving intervals of 20 days.
- In dairy herds a drop in milk yield of 8%.

Treatment of suckler herds is relatively simple and if the herd has not been treated this winter action should be taken immediately.

Suckler farmers can submit faeces samples to check their herd's status, or more accurately blood samples. The alternative is just to treat anyway.

Treatment of dairy cows is more difficult due to the fact that the products have a long withdrawal period for milk. Hence treatment is routinely done at drying off.

Dairy farmers can rapidly check their herd's Liver Fluke status by submitting a bulk milk sample. Once a herd is known to be infected treatment should be automatic every year, as the problem won't go away.

However a negative sample does not always indicate there is no infection and rechecks should be made every autumn and spring.

## **Closamectin Injection**

**NB There is a 60 day milk withdrawal.**

Treats cattle for liver fluke (adults & immatures), gastrointestinal roundworms,

lungworms, lice, mange mites. Ideal for all young stock and beef cows at housing.

We are able to offer **two special offers** which include injection guns;

**Pack 1:** contains 2 x 500ml which is enough for 83 x 300kg cattle or approx 40 adults: **£173.25 + vat.**

**Pack 2:** contains 4 x 500ml which is enough for 166 x 300kg cattle or approx 80 adults: **£336.00 + vat.**

For smaller numbers of cattle there are 100ml, 250ml and 500ml sizes and the gun is extra.

## **Trodax Injection – 1 litre pack (2x500ml).**

The pack contains 2x 500ml which contains enough for 66 x 500kg cattle (or 111 x 300 Kg) - **£135.51 + vat.**

## **Underdosing with Medicines – Dangers Exposed.**

A recent workshop for farmers held at an abattoir in northern England showed that without exception every farmer underestimated the weight of six demonstration cattle by 12 to 15% or 80 – 100 Kg.

The consequence of this is that livestock will be under-dosed for wormers and antibiotics. This means that some of the bacteria or parasites may survive treatment and also more importantly develop resistance. In addition the response to treatment will be reduced and the disease may develop into a long standing chronic condition.

## **Batch treatment for Pneumonia**

We have seen an increase in pneumonia cases over the last two months, probably as a result of the changeable weather. Remember that it is now known that for every animal showing obvious disease in the group there will be another animal with lung damage and no obvious signs of disease. Research has shown that these symptomless in-contact cattle take an extra 33 days to slaughter and gain 41g/day less. So when you have an outbreak of pneumonia in a group of cattle it pays to treat the whole group with antibiotic. The more severely affected should also be given anti-inflammatory treatment, e.g. Tolfine, Ketofen, Flunixin or use Resflor.