

THREE RIVERS VETERINARY GROUP

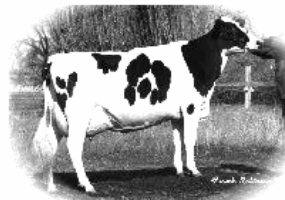
FARM ANIMAL PRACTICE

THE VETERINARY CLINIC,
LONDON ROAD, BECCLES,
SUFFOLK. NR34 9YU.

TEL: 01502 712169 FAX: 01502 712694

CATTLE PRACTICE

JUNE 2010 NEWSLETTER.



Animal Health (formerly known as Defra) is rolling out some road shows for farmers on TB in the East Anglian region, the details are below.

TB Road Shows For Farmers.

These have been arranged for:

- Tuesday 22nd June at The Lytton Suite, Novotel Stevenage, Knebworth Park, Stevenage, SG1 2AX.
- Wednesday 23rd June at the Best Western George Hotel, Station Street, Swaffam, PE37 7LJ.
- Thursday 24th June at the Animal Health Regional Office, Southgate Street, Bury St Edmunds, IP33 2BD.

The meetings will start at 7.00pm and finish at approximately 9.00pm.

Veterinary meetings have already been held.

Animal Health is concerned that TB may become endemic in East Anglia and they have increased the level of vigilance and wish to emphasise the importance of biosecurity and prompt testing of herds which are due for routine tests and purchased animals which have been traced as a risk (tracers).

The British Veterinary Association (BVA) has also failed to find agreement with Animal Health over the rates of remuneration for TB testing by private veterinary practices. This pay review was long overdue.

Last month Animal Health announced that it would put all TB testing out for competitive tendering in order to cut its costs. This opens the possibility of corporate organisations being formed to do the testing, much in the same way as meat inspection is currently provided at abattoirs.

The implications for private veterinary practice are not good and this would mean a further loss of contact between farmers and their own

veterinary surgeons and a loss of income for farm animal practices.

Serve Cows Earlier & Reduce Your Calving Interval.

By acting earlier on those cows that have not been seen in oestrus by day 42 and by reducing the period to the first service, easy improvements can be made to the calving interval on most dairy farms.

If 10 days are lost before the first service then an extra 15% in conception rate is required to make up the lost time. With the modern Holstein dairy cow it is much more difficult to increase the conception rate than it is to start serving earlier.

How can we set about an action plan to serve cows earlier i.e. from 42 days post calving onwards?

- Ensure the uterus is clean – i.e. check all cows 10 - 20 days post calving for infection and treat the dirty ones.
- Establish that the cows are cycling in the first 42 days after calving. The use of aids such as chalk or Kamars may help.
- Treat any cows which have not been seen cycling by day 42 post calving as soon as possible.
- Ensure that you have a simple and accurate system of recording which allows the early detection of non cycling cows.
- Pregnancy test all cows promptly at 30 - 35 days to ensure non pregnant cows are reserved as soon as possible.

Our practice has developed a simple recording system with explanatory notes which is available to everyone, please ask at reception.

M. E. BARDSLEY B. Vet Med. Cert CHP*. MRCVS.

* ROYAL COLLEGE OF VETERINARY SURGEONS CERTIFICATE HOLDER IN CATTLE HEALTH AND PRODUCTION

Calf Scours at grass could be Cryptosporidia.

Together with rotavirus, cryptosporidia is one of the most common causes of calf scour in UK dairy and suckler herds. But scours caused by cryptosporidia are not always confined to housed calves. Calves calving outside in the late spring are also susceptible to infection between one and two weeks of age, particularly if conditions underfoot are muddy around ring feeders.

The major source of cryptosporidia is thought to be either adult cows (which act as carriers without showing signs of disease) or infected scouring calves passing the parasite in their faeces. The infectious dose of the organism is very low and if ring feeders are not moved regularly the disease threat around them can be very similar to the housed situation.

Faecal contamination of feed and water troughs can also be reduced by raising and covering them.

If you do get any young calves scouring at grass ask us to test a faecal sample. We are able to test calf faeces at the practice for the following diseases;

- Rotavirus.
- Coronavirus.
- E. Coli K99
- Cryptosporidia.

The easiest way to obtain a sample is to insert a gloved finger into the rectum and a little stimulation will usually produce a sample.

We require about a teaspoonful from each calf in a sterile bottle, dairy farmers can use milk sample pots or we can provide you with sample pots and gloves. Remember that Cryptosporidia is transmissible to humans (as are some other calf scour organisms), so wear gloves and ensure the sample is handed to our staff inside a clean outer plastic bag/container.

Faecal samples will allow us to diagnose the cause of any scour problems on your holding – whether the disease is occurring at grass or when the animals are housed.

Cryptosporidiosis in calves is often seen in combination with other diseases, particularly rotavirus. So vaccinating cows against rotavirus with Rotavec-Corona® one to three months pre-calving can often tip the balance in your favour.

If cryptosporidia is a particular problem on your unit, you can reduce parasite replication and excretion with Halocur®. Halocur® is the only product licensed to treat and prevent

cryptosporidiosis. Administered orally to calves after feeding (daily for seven days), it can reduce the severity of diarrhoea and prevents the infection spreading to other calves.

Bull Testing.

James and I are now able to do bull breeding examinations and semen collection and this service will be available from July.

Beef bulls should be examined for fertility prior to the start of each breeding season and all bulls should have an examination before purchase; dairy bulls should be examined annually.

Whilst these examinations are not a guarantee of fertility they are very useful in assessing whether the bull is currently fertile and whether there are any problems which might affect his fertility. Even proven bulls have periods of poor fertility due to overuse, stress or illness and it is surprising how sensitive sperm production in bulls is to these factors. Even housing a bull next to a more dominant bull can reduce the quality and production of sperm.

We are running some workshops on bull fertility and the details are enclosed with this newsletter.

Butox Swish – controls flies (8weeks) and midges (4 weeks).

Now proven rainfast!

250ml - £14.63(8 cows).

1 Litre – £48.37 (33 cows).

2.5 Litre - £107.53 (83 cows).

12.0 Litre plus applicator (400 cow pack) £430.08. **All prices excluding Vat.**

Closamectin Pour-On.

For treatment of - lungworm; gastro-intestinal worms; Liver Fluke & Mites/Lice.

Dose rate - 1 ml per 10 Kg body weight.

1 litre: £119.84 + Vat.

2.5 Litre: £210.94 + Vat.

5 Litre: £418.95 + Vat.

Gun: £16.05 +Vat.

Ivermectin Pour-On Wormer .

For lungworm and gut worms:

2.5 litres Enovex at £46.09 + VAT!!!

Trodax Injection.

Treats liver fluke only – can be used with pour-on wormer.

The pack contains 2x500ml which contains enough for 66 x 500kg cattle (or 111 x 300 kg) - **£142.28+vat.**

M. E. BARDSLEY B. Vet Med. Cert CHP*. MRCVS.