

THREE RIVERS VETERINARY GROUP

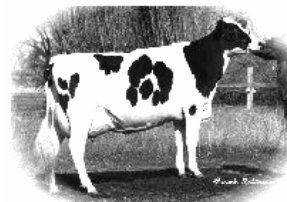
FARM ANIMAL PRACTICE

THE VETERINARY CLINIC,
LONDON ROAD, BECCLES,
SUFFOLK. NR34 9YU.

TEL: 01502 712169 FAX: 01502 712694

CATTLE PRACTICE

AUGUST 2009 NEWSLETTER.



In East Anglia the uptake of Bluetongue vaccine has been higher than anywhere else in the country. The predicted risk from the continent is high this year.

Bluetongue Update

There have been some developments concerning Bluetongue:

1. Advice re import of cattle from Protection Zones in Europe:

Due to the risks of transplacental infection; animals should have been vaccinated, with the vaccination having been completed at least 60 days before the imports are made. Also vaccination of any pregnant animals should have been completed, at least 3 weeks before service. This is particularly important in summer weather when virus replication could overtake the wait for tests.

There are new import rules introduced by DEFRA. The rules state when animals are imported to the UK, they should have a PCR test within 48 hours of arrival, and another 7 days later to pick up possible cases incubating the disease at the time of the first test.

2. Transplacental infection:

It is now known that embryos, whose dams are infected early in pregnancy, tend to be aborted early. Those infected in the last 3 months of pregnancy tend to be unaffected, or relatively so. It is the ones in the middle that are interesting, they can survive to full term, and while some may be stillborn, many will live, but may have a condition called hydroanencephaly, where the cerebral hemispheres are replaced by fluid, leaving them as "Dummy calves". They can suck, but not for long, and are strong candidates for

stomach tubing with colostrum, and whilst they will grow they remain mentally retarded.

What seems to be happening is that these calves are born viraemic. If they get a good feed of colostrum, whether naturally or by stomach tubing, the virus rapidly disappears, and thus the new arrival is not a threat to virus circulation in midges provided that it receives colostrum. If it doesn't it could be a source of infection for as long as it survived.

3. Over Wintering:

The possible mechanisms by which the virus may "over winter" are actively being researched and while transplacental transmission is still an obvious method, the possibility of what might be called virus hibernation in non ruminant species cannot be ruled out.

4. 2009 Situation:

The only reports of disease are from France where so far this year there have been 14 holdings positive to BTV8 and 30 to BTV1, though some of those may be surveillance cases picking up a remnant of last year's infection.

It is calculated that eradication in Europe would only be achieved after a HIGH level uptake of vaccine for at least 3 or 4 years. A level of vaccine below 60% will lead to infection being present for many years. Weather conditions were ideal for the last week of June to lead to rapid spread of and multiplication of BTV (which didn't happen here last year).

M. E. BARDSLEY B. Vet Med. Cert CHP*. MRCVS.

5. Some Statistics:

- a. In Belgium in 2007 27% of the national sheep flock was infected with BTV8, and of those 40% died.
- b. Due to severe BTV problems last year - the number of calves born in France so far this year is 20% lower than at the same time last year.
- c. In Holland, the prevalence of BTV in cattle that were housed all year round was considerably lower than in cattle kept wholly or partly outdoors.

Unexplained Haemorrhagic Syndrome in Calves.

This is a new disease of calves, which started in Germany and Belgium. A few cases have occurred this year in Scotland and now the first case has been seen in England.

The disease is seen in calves from 10 to 28 days of age and both beef and dairy calves have been affected. The symptoms are quite dramatic in that sick calves appear to bleed through their skin; the term 'blood sweating' has been used to describe the condition. Affected calves run a temperature and may also bleed from the nose, mouth, rectum and other areas such as ear tagging sites. Internal haemorrhages also occur and the mortality rate is high. These calves have changes in their blood cells which results in a blood clotting disorder.

No cause has been found for this disease; although investigations are ongoing in a number of countries including the UK. No reports of any risks to human health have been noted.

Summer Mastitis/New Forest Eye

The fly levels are currently predicted to be above average and this year looks set to be a high-risk year.

Routine prevention measures are:

- Make sure that all dry cows receive dry cow therapy and Orbeseal.
- Use a good fly control product for all classes of cattle – Butox Swish.
- Keep cows away from the preferred environment of the fly. The lowest incidence pastures are usually open and on high ground. Avoid fields, which have low lying, damp and wooded areas within 100 yards of the boundary.

- Don't forget maiden and pregnant heifers in your preventive measures.
- Treat both diseases as soon as possible.

Butox Swish - controls flies (8weeks) and midges (4 weeks).

250ml - £14.13 (8 cows).

1 Litre - £46.73 (33 cows).

2.5 Litre - £103.89 (83 cows).

12.0 Litre plus applicator (400 cow pack) £415.54. *All prices excluding Vat.*

Summer Parasite treatments Due Now!

Now is the time to ensure you are on top of parasite problems in your cattle at pasture.

Thunderstorms can lead to a rapid spread of larvae from dung pats and a localised outbreak of lungworm and parasitic gastroenteritis.

Recent work has shown that higher levels of liver fluke infection are being seen due to an increase in over wintered infection on pastures. So it pays to treat now:

- Lungworm.
- Gastro-intestinal worms.
- Liver Fluke.

Ivermectin Pour-On .

For lungworm and gut worms:

2.5 litres Enovex at £44.74 + VAT!!!

If you don't have a gun we can provide one for £19.00 +VAT.

Closamectin Injection – Offer Price.

NB There is a 60 day milk withdrawal.

Treats cattle for liver fluke (adults & immatures), gastrointestinal roundworms, lungworms, lice, mange mites.

Pack 1: contains 2 x 500ml which is enough for 83 x 300kg cattle or approx 40 adults: **£173.25 + vat.**

Pack 2: contains 4 x 500ml which is enough for 166 x 300kg cattle or approx 80 adults: **£336.00 + vat.**

For smaller numbers of cattle there are 100ml, 250ml and 500ml sizes and the gun is extra.

Trodax Injection – Offer Pack.

Treats liver fluke only – can be used with pour- on wormer.

The pack contains 2x500ml which contains enough for 66 x 500kg cattle (or 111 x 300 Kg) - **£135.51 + vat.**

M. E. BARDSLEY B. Vet Med. Cert CHP*. MRCVS.